

# How to get to the Apartment House Saturnin

The address of the house is:

**Orebitská 5/726**

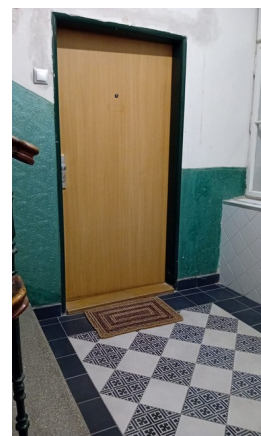
**Praha 3 – Žižkov**

website of the house: <https://guesthouse.saturnin.info/>

There is a map of Prague City Centre and the house is signed as “Apartment Orebitská”



**You will get the name of your apartment from the building manager**



## Access to the house

There is a little keyboard at the main door, you will put the code [you will get the code via SMS or Email] and press #, the door will unlock, and you can just push it and enter. There are two small safes on the wall. You will get your keys there (you will get a note what safe and what code is for

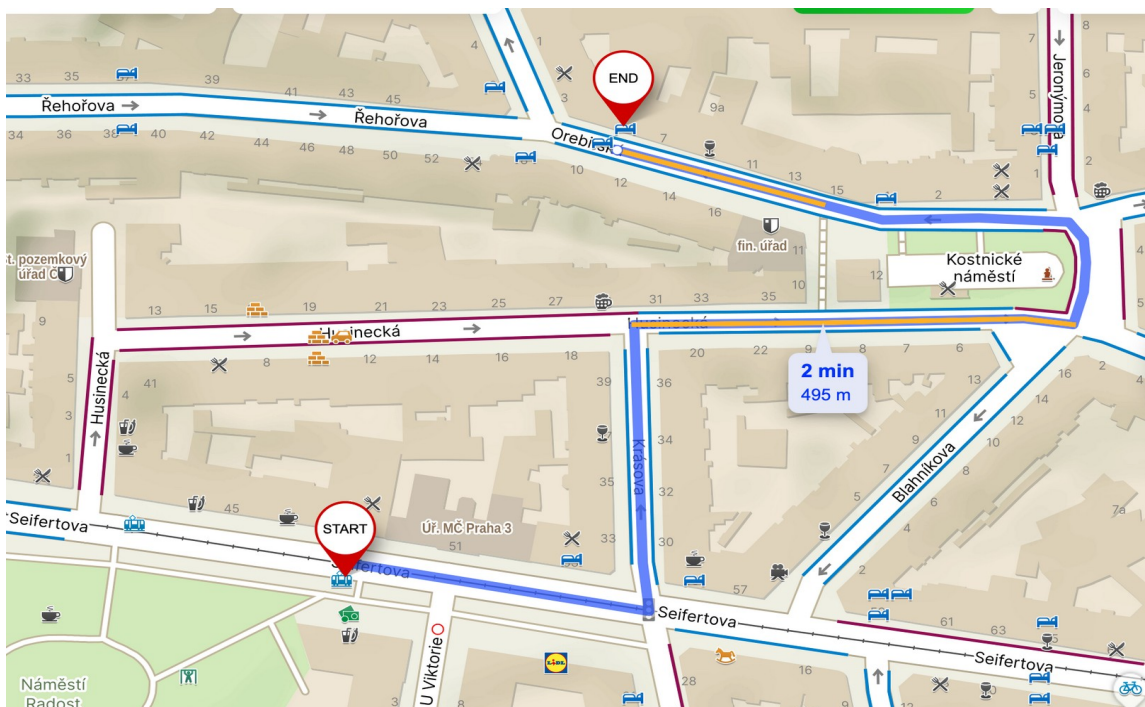
you). You will keep the set of keys the whole stay and when you leave, you will leave the set of keys on the kitchen counter.



## The way from the Main Station

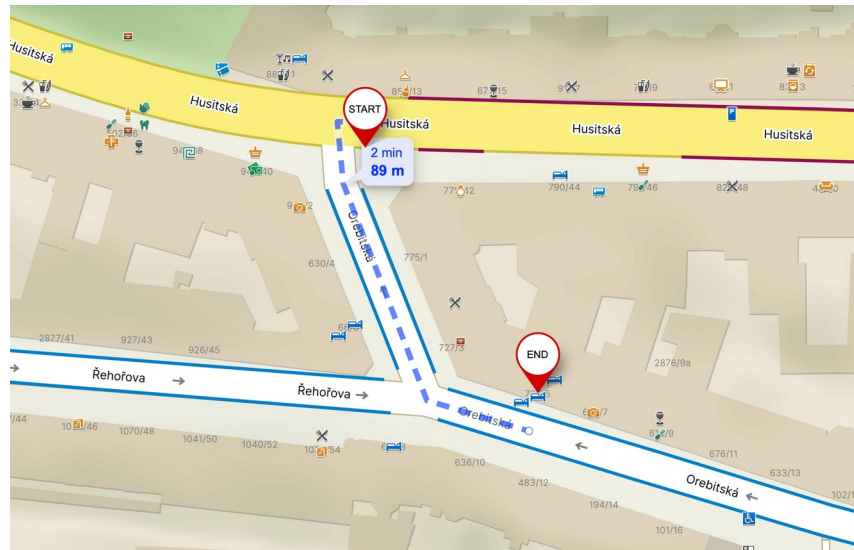
If you come by train to "Hlavní nadraží" alias "Wilsonovo", you can go on foot or by tram 9, 5, 26, or 15, one stop. You get out at the tram stop "Viktoria Žižkov".

The plan for how to get to the house is in the attached map



## The way from the Bus Station Florenc

If you come by BUS to the station "Florenc", you can go on foot or by bus 133, 207, 175 from there. You will go two stops and get out on the stop "U Památníku"



## The way from the Airport

If you come by plane to "Praha Ruzyne - Letiště Václava Havla" you can go by the special bus Airport Express. It is a bus line straight from the Airport to the Main train station. So you can use this line

The second way from Prague airport "Praha Ruzyne" is by bus 119. It is a bus line from the Airport to the nearest underground station "Nádraží Veleslavín". When you reach the underground "Nádraží Veleslavín", it is line "A", you have to go to the underground "Florenc", it is line "B" and "C", so you have to change the underground line along the way. Changing the line is possible in the station "Mustek" from line "A" to line "B", or "Muzeum", it is possible to change line from "A" to "C". It is up to you.

When you come to the station "Florenc", you can go on foot or by bus 133, 207, 175 from there. It is the same way as described above.

## Tickets and prices for public transport

Tickets are for trams, buses and metro the same. Only the Airbus Express is a special transport option; it is not possible to use the standard tickets, but it is possible to buy a ticket for the driver. Standard tickets have a price dependent on the time the travel and the age of the passenger. The ticket for an adult 90 minutes costs 40Kc, the ticket for an adult for 30 minutes costs 30Kc. These two types of tickets are available to buy everywhere in little shops with newspapers or drugstores. The nearest shop to our house, where it is possible to buy tickets for public transport, is at the tram station. Every ticket you must validate when you get into the vehicle. You can also use the ticket machine in a tram or a bus and print the ticket. This "on-demand" printed ticket doesn't have to be validated.

**Vending ticket machine in metro**



**Vending ticket machine in a tram.**

